

# China Chrome Ore Market Overview

---

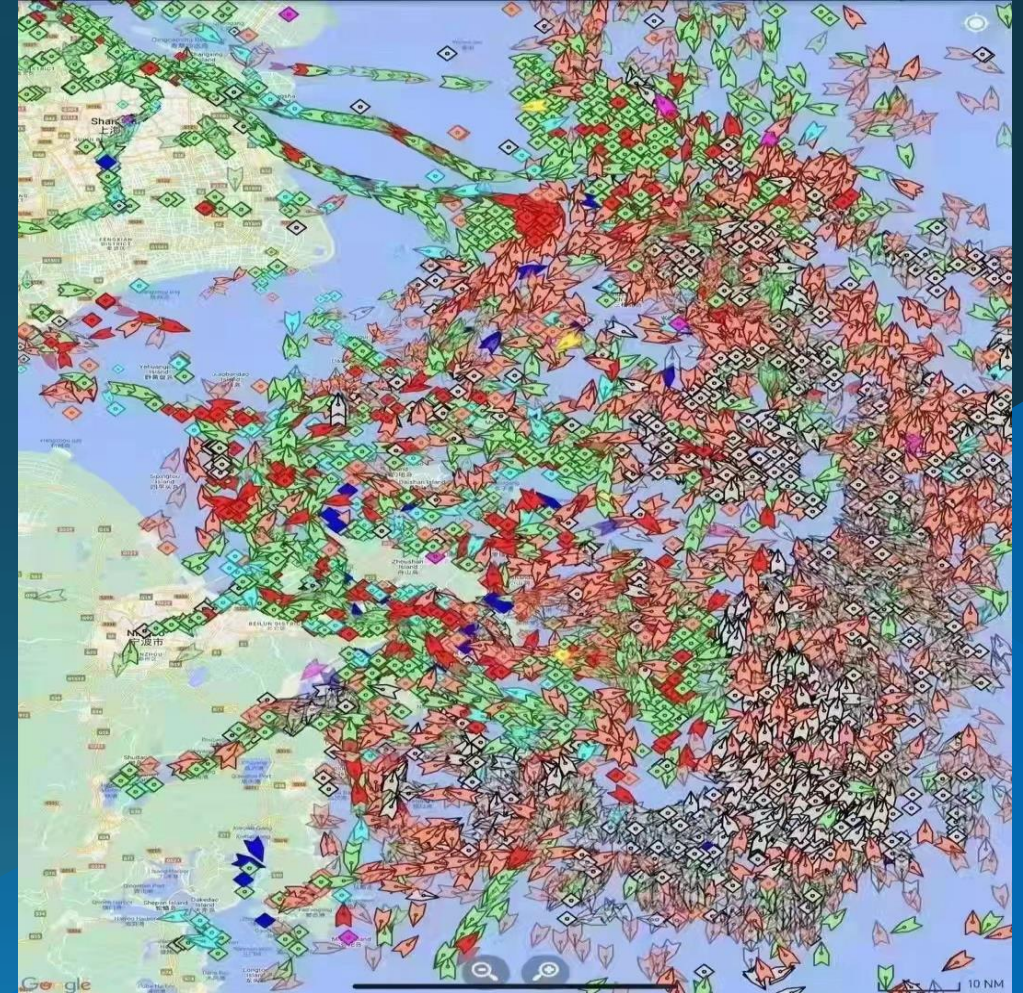
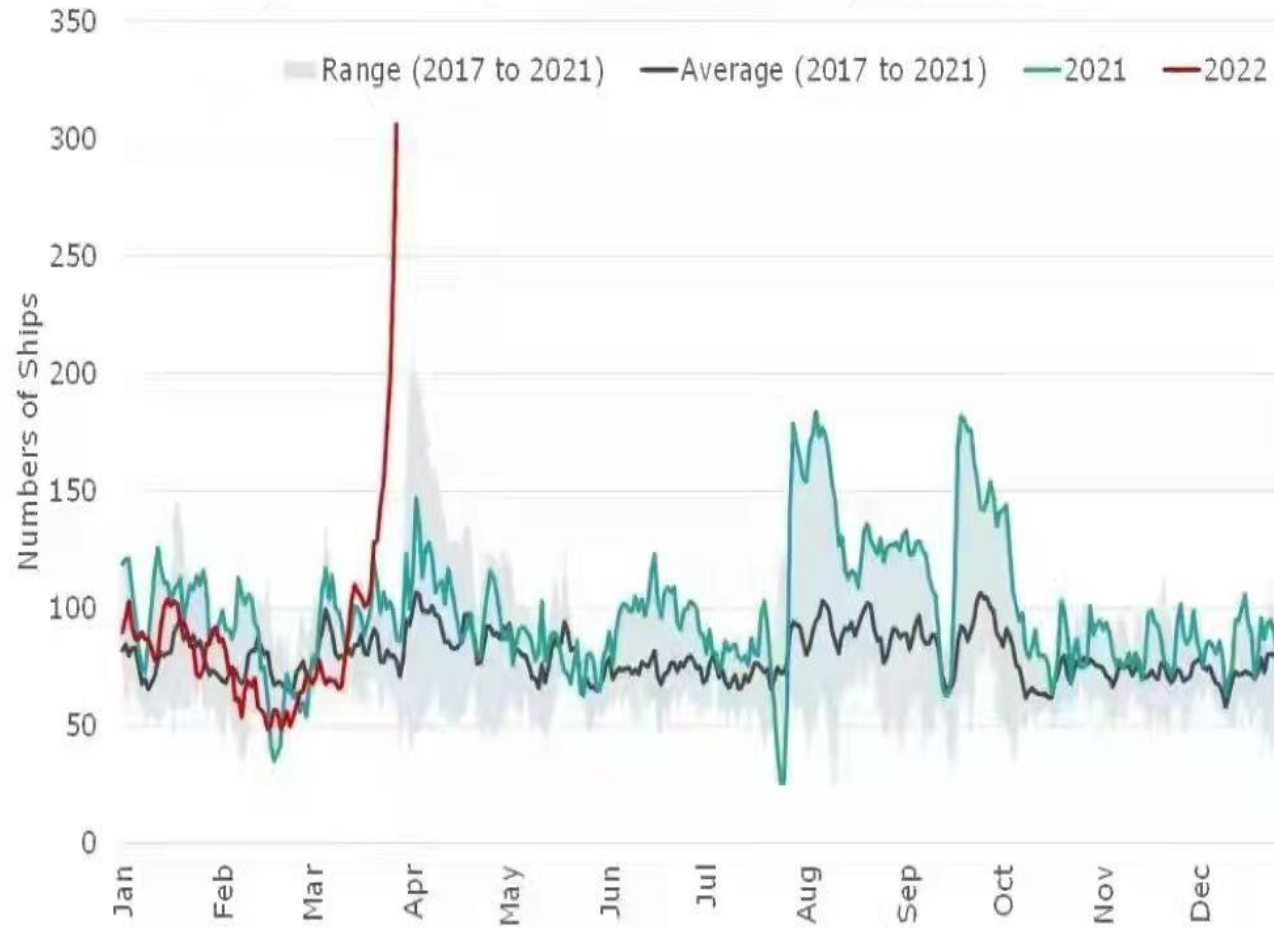
Shanghai, 7 April 2022

# Market News - Current lockdown situation in Shanghai and possible impact

BEYOND REPRESENTATION

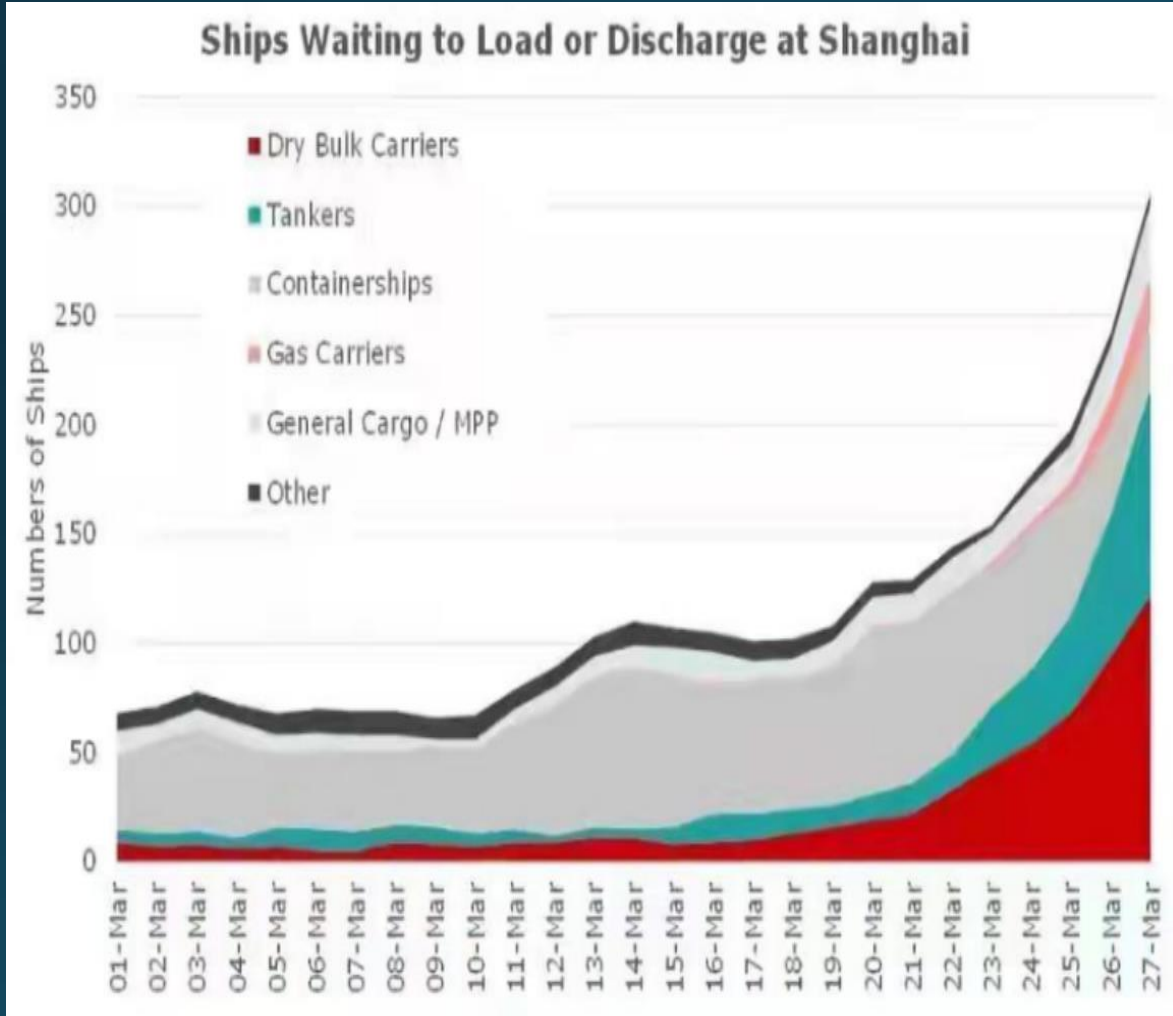


## Ships Waiting to Load or Discharge at Shanghai



# 02 Market News - Current lockdown situation in Shanghai and possible impact (ii)

BEYOND REPRESENTATION



Shanghai, China's zero-Covid policy is in full force, with lockdowns in affected districts and restrictions on transport.

According to Thomas Gronen, head of Greater China at Fibs Logistics, most of the Shanghai lockdowns are in residential areas and, therefore, while the ports are operating it is "very likely they are short-staffed and backlogs and congestion are building."

To leave Shanghai, truck drivers require a PCR test within 48 hours – "if the driver isn't in lockdown" – and again to re-enter the city.

At this stage city has entered full lockdown and any movement in the city is extremely limited.

## 天津港铬矿库存统计（单位：吨）

库房	本周库存	与上周对比	库存环比
八万库	44113	-2500	-5.36%
地材库	114047	-5900	-4.92%
津洋库	43500	-2000	-4.40%
四公司后货场	144434	-16000	-9.97%
四公司前货场	43380	-1000	-2.25%
物捷一	314741	-40200	-11.33%
洲丽库	36855	-3300	-8.22%
物捷二	32500	-1000	-2.99%
五公司	68394	-5000	-6.81%
汇盛西货场	216731	-17854	-7.61%
中心站	72500	-18999	-20.76%
港俊库	56276	-6968	-11.02%
六十万堆场	276157	-30151	-9.84%
四十万堆场	33596	-7500	-18.25%
南疆其他仓库	25000	-10100	-28.77%
验放三场南北院	180484	27498	17.97%
宏业库	108827	-10500	-8.80%
中材库	44000	0	0.00%
合计	1855535	-151474	-7.55%

Chrome Ore stock in Tianjin according to 18 active stockyards in Xingang Port + the current movements over the last week.

Total: **1,855,535 Mt**

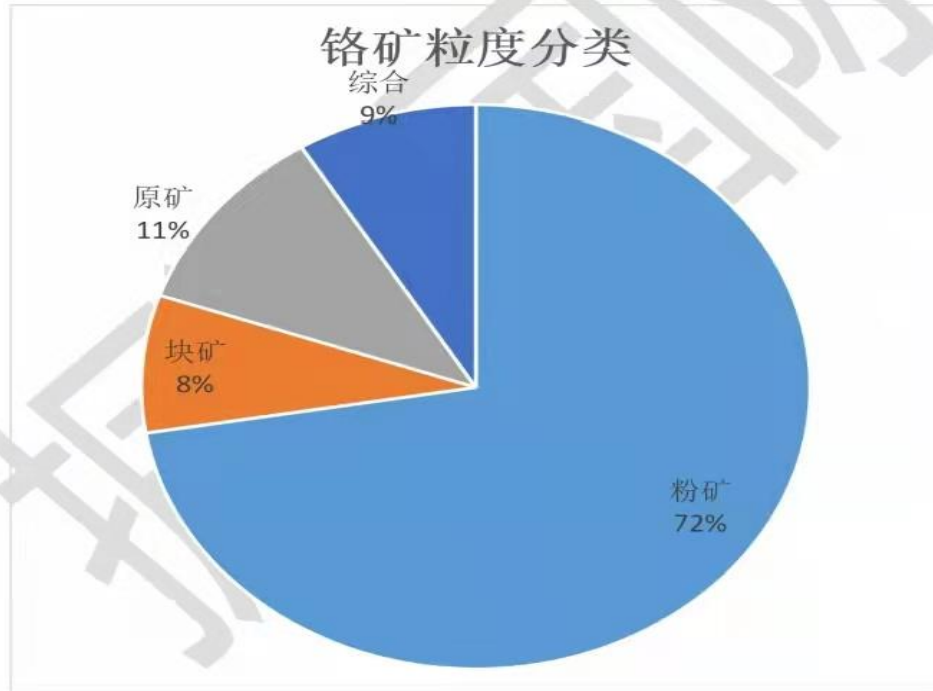
Dropped by **151,474 Mt** in the past week

Thats a **7.55% weekly drop**

铬矿粒度分类（单位：吨）

粒度	本周库存	与上周对比	库存环比
粉矿	1343562	-123392	-8.4%
块矿	146401	-15069	-9.3%
原矿	203572	-16013	-7.3%
综合	162000	3000	1.9%
合计	1855535	-151474	-7.5%

Concentrate  
Small Lump  
ROM  
Other



With a total of 1,86 million tons of chrome ore in Xingang (Tianjin);

- 1.34 million Mt is concentrate
- 146k Mt lump/small lump
- 204k Mt is ROM
- 162k Mt is unclassified/other

It is clear that concentrate (mostly associated with being South African UG2 concs makes up the majority of chrome ore in Tianjin Port

2022年4月

6日

# 不锈钢铬系价格日报

## 铬矿价格

品目	产地	规格	天津港		钦州港	
			现货	远期	现货	远期
精矿	南非	40-42%	43 -	250 -	45 -	260 -
		42-44%	50 -	315 -	52 -	320 -
	土耳其	46-48%	65 -	405 -	—	—
	津巴布韦	48-50%	58 -	350 -	—	—
块矿	南非	38-40%	57 -	320 -	58 -	320 -
	土耳其	40-42%	68 -	365 -	68 -	370 -
	阿尔巴尼亚		—	390 -	66 -	395 -
籽矿	南非	36-38%	54 -	295 -	57 -	295 -
原矿		38-40%	48 ↑1	285 -	49 ↑1	285 -

注：现货价格为元/吨度，远期价格为美元/吨

## 铬铁价格

品目	地区	规格	价格
高碳铬铁	内蒙古	FeCr55C1000	9300 ↑100
	四川		9400 ↑100
	山西		9300 ↑100
	广西		9600 ↑100
	华东	9600 ↑100	
	印度	CR60% Si4%	9340 -
	南非	CR50% Si4%	9394 -
	哈萨克斯坦	CR70% Si0.5%	13500 -
中碳铬铁	内蒙古	FeCr60C200	15900 -
低碳铬铁		FeCr55C25	16200 -
微碳铬铁		FeCr55C6	16900 -

注：高碳铬铁为元/50基吨，中碳、低碳、微碳铬铁为元/60基吨，华东为包到价格

## 钢厂招标

品种	钢厂	规格	采购量	招标价	备注
高碳铬铁	宝钢德盛	FeCr55C1000	常量	8995 ↑500	含税到厂价

Concentrates - South Africa 40-42% (Spot TJ 43RMB DMTU)

Concentrates - South Africa 42-44% (Spot TJ 52RMB DMTU)

Concentrates - Turkey 46-48% (Spot TJ N/A)

Concentrates - Zimbabwe 48-50% (Spot TJ N/A)

Lumpy - South Africa 38-40% (Spot TJ 57/RMB DMTU)

Lumpy - Turkey 40-42% (Spot TJ 68/RMB DMTU)

Lumpy - Albania 40-42% (Spot TJ N/A)

**我的钢铁**

查价格 找商机

2022-04-07 18:08

4月7日南非某矿山进行新一轮铬矿报盘，天津港南非 42%Ug2 精粉散货价 265 美元/吨，数量 5000 吨，铬铁比 1.35min，船期为 5 月底之前。

**我的钢铁**

查价格 找商机

2022-04-07 17:15

4月7日南非某大型矿山进行新一轮报盘价，南非 42% 精粉 261-265 美元/吨，环比上一轮报盘价上涨 10 美元/吨。

### Today MySteel in Shanghai Reported:

A miner in South Africa made an offer for South African UG2 to Tianjin, 5,000 Mt at USD265 with Cr:Fe ratio 1.35:1 Min and shipment period before the end of May

Another miner from South Africa is offering 42/40 SA Concs at USD261-USD265

# 07 Market Observations in Chinese Market

BEYOND REPRESENTATION



2022-04-07 11:26

随着粉矿价格持续上涨，原矿整体涨幅不及粉矿，性价比提升，加之因环保问题导致工厂烧结能力受阻，工厂增加对原矿使用量，询盘采购表现积极。当前原矿现货可流通货源有限，港口持续去库且到港量少，提振贸易商报价多上调，挺价心态明显，近期国内南非原矿市场表现良好，现货均上调2元/吨度。目前高报价在吨度价+15左右，4月7日原矿市场主流价格：南非36-38%原矿48-50元/吨度；南非38-40%原矿50-52元/吨度；南非40-42%原矿52-54元/吨度。

It was pointed out today that while future ore prices continued to increase, while environment and cost performance ration of higher grade cargoes encouraged factories to focus higher grade ores, the supply of raw ore remains limited.

There is still a significant gap between the Chinese Spot ore market where:

- 36-38 ROM is trading 48/50 RMB/DMTU
- 38-40 ROM is trading 50/52 RMB/DMTU
- 40-42 ROM is trading 52/54 RMB/DMTU

Roughly calculated after handling and import duties on that during import equals;

- 36-38 ROM equivalent on spot market is \$250
- 38-40 ROM equivalent on spot market is \$275
- 40-42 ROM equivalent on spot market is \$300
- 42/40 SA concs at 43 RMB/DMTU = \$242.50 on the spot market



## 钦州港铬矿期货成交统计

2022年04月02日【铬】

产品	品位	价格	港口
南非铬块矿	38-40%	320 (美元/吨)	钦州港
南非铬精矿	42%	260 (美元/吨)	钦州港
南非铬粗粉	42%	290 (美元/吨)	钦州港
南非铬精矿	42%	275 (美元/吨)	钦州港

### Reported Prices in Qinzhou Port:

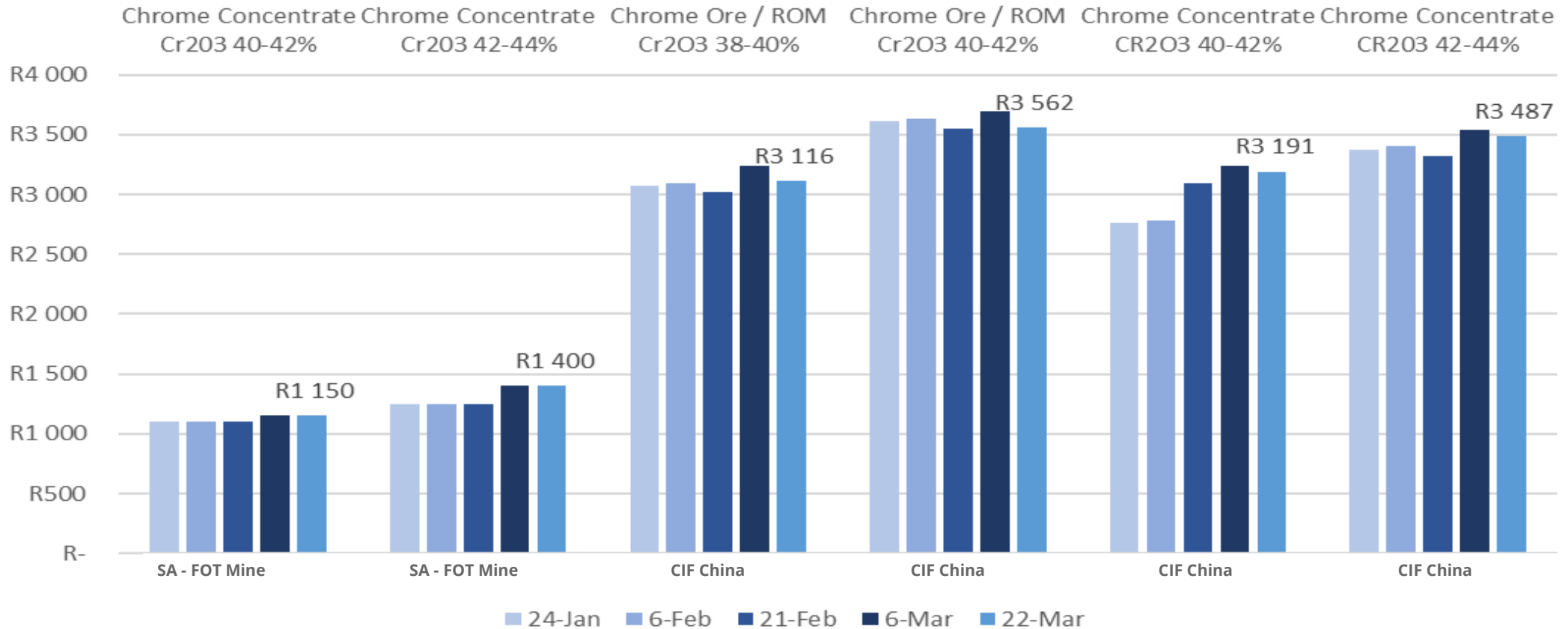
SA 38-40 lumpy - \$320/Mt

SA 42-40 SA concs - \$260/Mt

SA 42-40 ROM - \$290/Mt

SA 42-40 (LG) SA concs - \$275/Mt

### Chrome Ore Price Time Series



For more information please do not hesitate to contact us

Jonathan Claesen Email: [jona.claesen@outlook.com](mailto:jona.claesen@outlook.com)